

## Into the Woods Audition: Cinderella – “On the Steps of the Palace”

- Please prepare measures 23B-57. The entire song is included for your reference.
- Click here for audio examples:
- Vocal Audio Track Example:

<https://drive.google.com/file/d/1q4zElNedw7ezqOQzSOiTNrSolXLbXcSU/view>

- Rehearsal Tracks for Audition:

<https://drive.google.com/file/d/1XTJo9850u3Ug4hO4Dxj7qFJ2eLuoxmAL/view>

The image displays a musical score for the song "On the Steps of the Palace" from the musical "Into the Woods". The score is written for a single vocal part, Cinderella, in the key of D major (two sharps) and 3/8 time. The tempo is marked "Allegretto grazioso (♩. = 88)". The score begins with a treble clef and a key signature of two sharps. The first line of music is marked with a large number "2" above it. The second line of music is marked with a large number "3" above it. The third line of music is marked with a large number "4" above it. The fourth line of music is marked with a large number "5" above it. The fifth line of music is marked with a large number "6" above it. The sixth line of music is marked with a large number "7" above it. The seventh line of music is marked with a large number "8" above it. The eighth line of music is marked with a large number "9" above it. The ninth line of music is marked with a large number "10" above it. The tenth line of music is marked with a large number "11" above it. The eleventh line of music is marked with a large number "12" above it. The twelfth line of music is marked with a large number "13" above it. The thirteenth line of music is marked with a large number "14" above it. The fourteenth line of music is marked with a large number "15" above it. The fifteenth line of music is marked with a large number "16" above it. The sixteenth line of music is marked with a large number "17" above it. The seventeenth line of music is marked with a large number "18" above it. The eighteenth line of music is marked with a large number "19" above it. The nineteenth line of music is marked with a large number "20" above it. The twentieth line of music is marked with a large number "21" above it. The twenty-first line of music is marked with a large number "22" above it. The score includes lyrics for the vocal part, which are: "He's a ver - y smart", "prince, He's a prince who pre - pares. Know-ing this time I'd", "run from him, He spread pitch on the stairs. I was caught un-a - wares.", "And I thought: Well, he cares This is more than just", "mal-ice. Bet-ter stop and take stock while you're stand-ing here stuck on the steps of the". The score also includes a rehearsal mark "CINDERELLA: mp" above the first line of music.

**Allegretto grazioso (♩. = 88)**

**2**

**3**

**4**

**5**

**6**

**7**

**8**

**9**

**10**

**11**

**12**

**13**

**14**

**15**

**16**

**17**

**18**

**19**

**20**

**21**

**22**

**CINDERELLA: mp**

He's a ver - y smart

prince, He's a prince who pre - pares. Know-ing this time I'd

run from him, He spread pitch on the stairs. I was caught un-a - wares.

And I thought: Well, he cares This is more than just

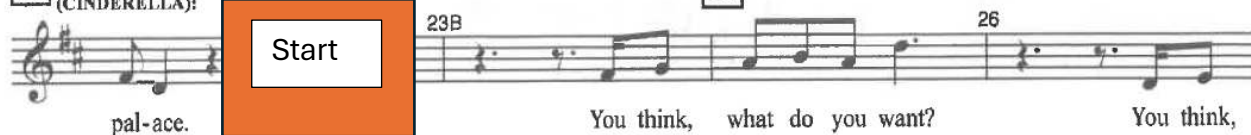
mal-ice. Bet-ter stop and take stock while you're stand-ing here stuck on the steps of the

23

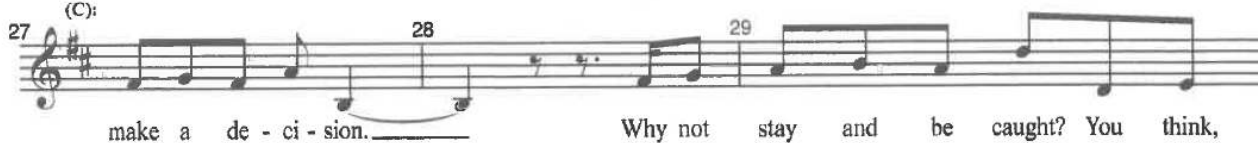
(CINDERELLA):

Start

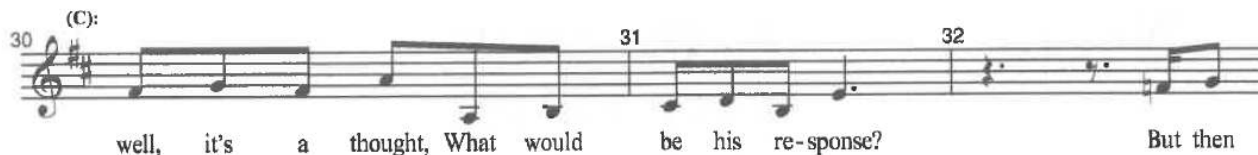
25



27 (C):



30 (C):



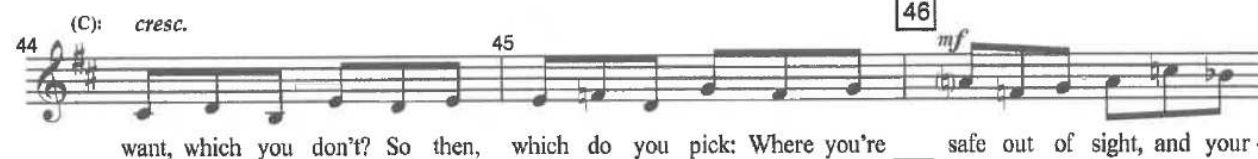
33 (C):



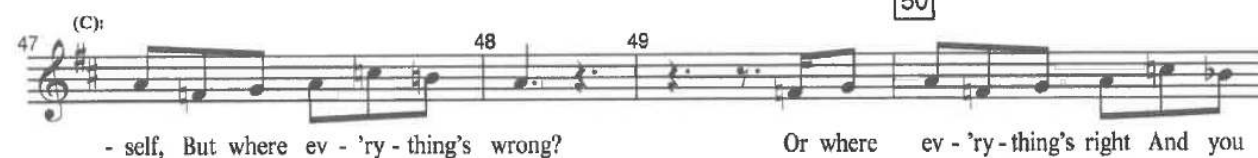
36 (C):



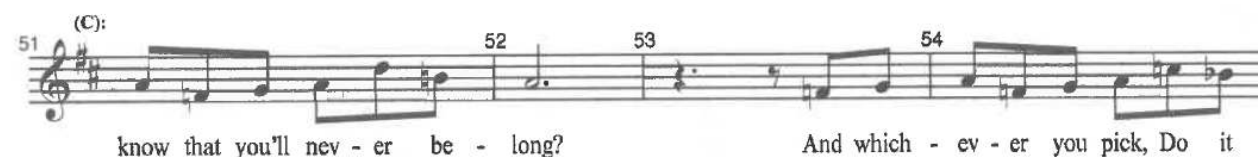
41 (C):

44 (C): *cresc.*

47 (C):



51 (C):

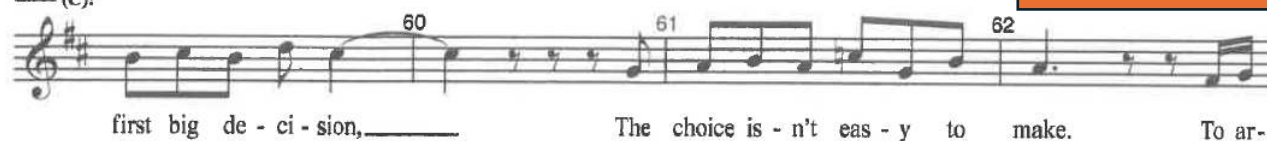


(CINDERELLA):



End

59 (C):



(C):



67 (C):



(C):



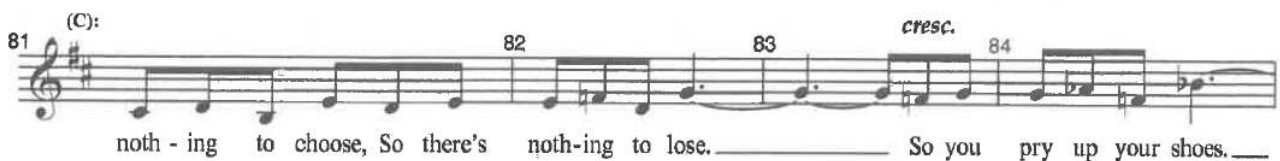
(C):



(C):



(C):



(C):



88 (CINDERELLA): 89 90 91 *mp*

- out an - y guide, \_\_\_\_\_ You know what your de - ci - sion is, \_\_\_\_\_ Which is not to de -

to ♩ or ♩♩

92 (C): 93 94 95

- cide. You'll just leave him a clue: For ex - am - ple, a

# 96 ♩ Solo Ending

(CINDERELLA): 97 98 99

shoe. And then see what he'll do. Now it's he and not

100 (C): 101 102 103 (to ...)

you who is stuck with a shoe, In a stew, In the goo, And you've

103A (C): *cresc.* (to ...) 104 105 *mf*

learned some - thing, too, Some - thing you nev - er knew, \_\_\_\_\_ On the steps of the

106 (C): 107 108 109

pal - ace. \_\_\_\_\_