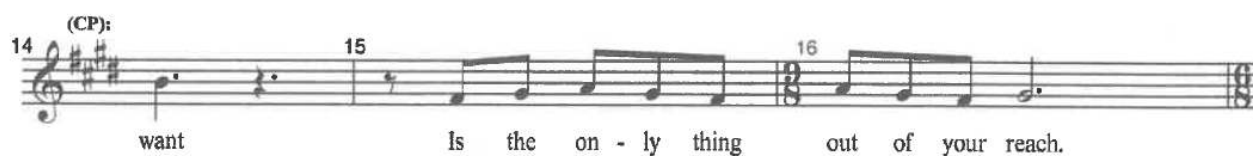
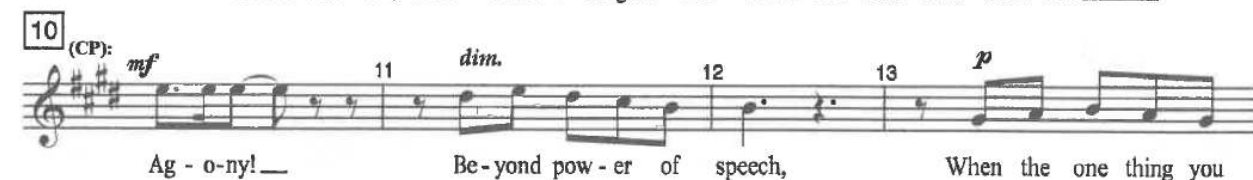


Into the Woods Auditions: Cinderella's Prince/Rapunzel's Prince – “Agony”

- Please prepare measures 1-39. The entire song is included for your reference.
- Vocal Audio Track Example:
https://drive.google.com/file/d/1cwfsOkueFc_5YuSimJtn8PVvLaGGMiMb/view?usp=sharing
- Rehearsal Tracks for the Audition:
<https://drive.google.com/file/d/1md62pt8APra2kb7qPGYhNEHDtoxWTDqV/view?usp=sharing>

Start

CINDERELLA'S PRINCE:



17 RAPUNZEL'S PRINCE:



(RAPUNZEL'S PRINCE):

23 light - heart - ed air: 24 *dolce* Aaahhh 25

26 (RP): *mf* Ag - o-ny! 27 Far more pain - ful than yours, 28 29 *mp* When you know she would

(RP): 30 go with you, 31 If there on - ly were doors. 32

33 CINDERELLA'S PRINCE: *mf* Ag - o-ny! 34 Oh the tor - ture they teach! 35 36

RAPUNZEL'S PRINCE: *mf* Ag - o-ny! 34 Oh the tor - ture they teach! 35 36

(CP): 37 *p* 38 Or half as fa - ti - guing... As what's out of reach? 39 40

(RP): *p* What's as in - tri - guing... As what's out of reach?

End

41 (CP): 42 *cresc.* 43

sen - si - tive, clev - er, Well - man - nered, con - sid - er - ate, Pas - sion - ate, charm - ing, As

(RP):

(CINDERELLA'S PRINCE):

44 *f* 45 46
kind as I'm hand - some, And heir to a throne?

(RAPUNZEL'S PRINCE):

f
You are ev - 'ry - thing maid - ens could

(CP):

47 *p* 48 49
Then why no—? The girl must be mad!

(RP):

wish for! Do I know?

RAPUNZEL'S PRINCE:

Rall.

50 *p* 51 52 *p*
You know noth - ing of mad - ness Till you're climb - ing her

53 A tempo

(RP):

cresc. 54 55
hair And you see her up there As you're near - ing her, All the while hear - ing her

(RP):

56 *mf* 57 58 *cresc.*
"Aaahhh..."

59 CINDERELLA'S PRINCE:

f 60 61
Ag - o - ny! Mis - er - y! _____ Though it's dif - f'rent for each.

RAPUNZEL'S PRINCE:

f
Ag - o - ny! _____ Woe! Though it's dif - f'rent for each.

62 (CINDERELLA'S PRINCE): *mf* 63 64 *mp* 65

Al - ways ten steps be - hind... And she's just out of reach.

(RAPUNZEL'S PRINCE): *mf* *mp*

Al - ways ten feet be - low... And she's just out of reach.

66 (CP): *mf* 67 68 69 *mp* **Freely**

Ag - o-ny — That can cut like a knife! I must have her to

(RP): *mf* *mp*

Ag - o-ny — That can cut like a knife! I must have her to

70 (CP): **A tempo** **Poco rit.** 71 72 73

wife. _____

(RP):

wife. _____