

## Into the Woods Auditions: Witch – “Witch’s Lament”

- Please prepare measures 1-20. The entire song is included for your reference.
- Vocal Audio Track Example: <https://drive.google.com/file/d/1ttWjGZ1i0FUaEU9vXY0-XefKjPzrcSGG/view?usp=sharing>
- Rehearsal Tracks for Audition: <https://drive.google.com/file/d/18EAJ9tN0sh7lSN-pPb1s8Ryalc9V2L5P/view?usp=sharing>

Start

**Rubato**

**1** **WITCH:** *f*

This is the world I meant. Could-n't you lis-ten? — Could-n't you stay con-tent, Safe\_\_ be-hind

**4** **A tempo** (♩ = 100) *mp*

walls, as I \_\_\_\_\_ could not?

**8** **(W):**

Now you know what's out there in the world.

**12** **(W):**

No one can pre - pare you for the world, Ev-en I. How could

**16** **(W):**

I, \_\_\_\_\_ who loved you as you were. How could I, \_\_\_\_\_ have shield-ed you from

**19** **(W):**

her and them?

**20**

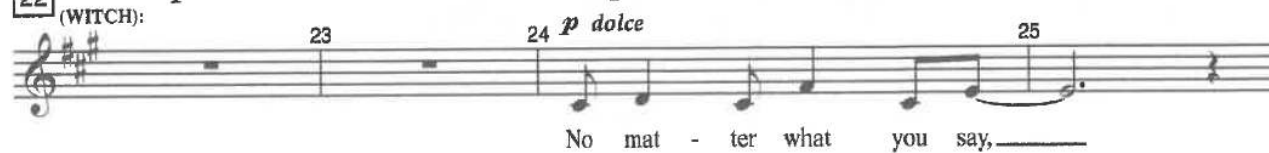
Safety

End

22

## Espressivo e misterioso (A tempo)

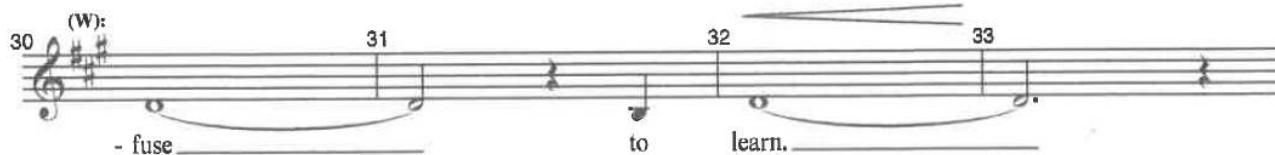
(WITCH):



26 (W):

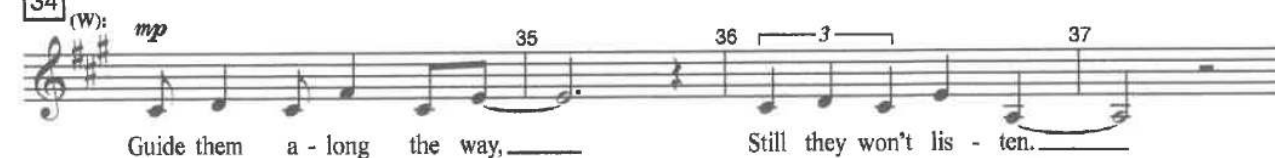


30 (W):

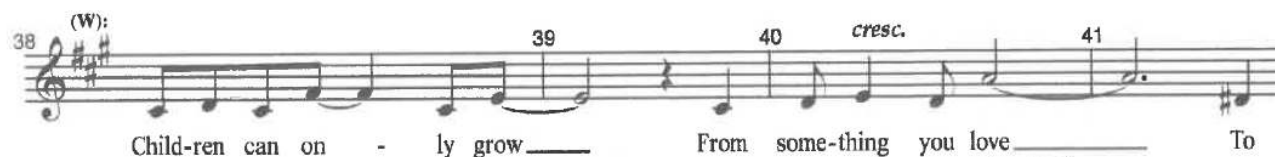


34

(W):

*mp*

38 (W):

*cue to cut off:***BAKER:** You'll never get there.**Vamp**

42 (W):

